



CF7W UHF (470 to 600 MHz) Bandpass Filters

CF7W 470-600 CF7W 470-600/617

Models **CF7W 470/600** and **CF7W 470/600/617** are designed to pre-select the UHF band for Off-the-Air TV receive systems.

Model **CF7W 470/600** passes 470 to 600 MHz spectrum, suppress signals from 5-440 MHz, and, 640 to 1000 MHz.

Model **CF7W 470/600/617** passes 470 to 600 MHz spectrum, suppress signals from 5-440 MHz, and, 617 to 1000 MHz; (617-700 MHz is intended for Band 71, LTE)

See sample graphs below.

Specifications:

- Passband Insertion Loss: <1.5 dB (except <3.0 dB at band edges)
- Pass band Input Return Loss: >15 dB typical
- CF7W-470/600/617 rejects band 71 (LTE) - see graphs
- Temperature stable from -10° to +40° C
- RF Power handling up to 2 watts
- Indoor enclosure with 75 ohms F connectors (female)
- Supplied with final production graph.

CF7W Options:

Enclosure: Indoor, Outdoor, or, Rack Mount

Custom Pass band

Specify “Lower and Upper” 3dB cutoff frequencies (e.g., CF7W-500/650—3dB cutoff 500 and 650 mHz). Approx 6% frequency transition between passband edge and 40 dB stopband. Increased bandpass selectivity available with external filters.

Impedance and Connectors :

75 ohms connector options:

F type female/ male, BNC female/male

50 ohms connector options:

SMA, BNC, or N female/male

CF7W-470/600

Dim (in): 4.0 x 2.5 x 2



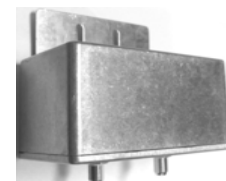
CF7W-470/600/617

Dim (in): 7.5 x 2 x 1.75



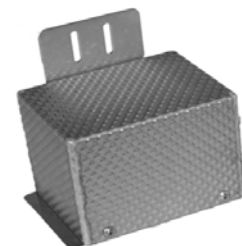
CF7WX-470/600

Outdoor enclosure
Dim (in): 4.5 x 3.5 x 2.5



CF7WX-470/600/617

Outdoor enclosure
Dim (in): 6.5 x 6.5 x 4.5



CF7W-470/600/617 RM

1.75 x 19 “ Rack or Wall Mount



Order as:

Indoor model:

CF7W-470/600 or CF7W-470/600/617

Outdoor Model

CF7WX-470/600 or CF7WX-470/600/617

Rack Mount Model

CF7W-470/600 RM or CF7W-470/600/617 RM

Option: Connector/Impedance (CI)(Affix CI to model #):

Ex 1: CF7W-470/600 B50 (BNC 50 ohms)

Ex 2: CF7WX-470/600 B50 (Outdoor, BNC 50 ohms)

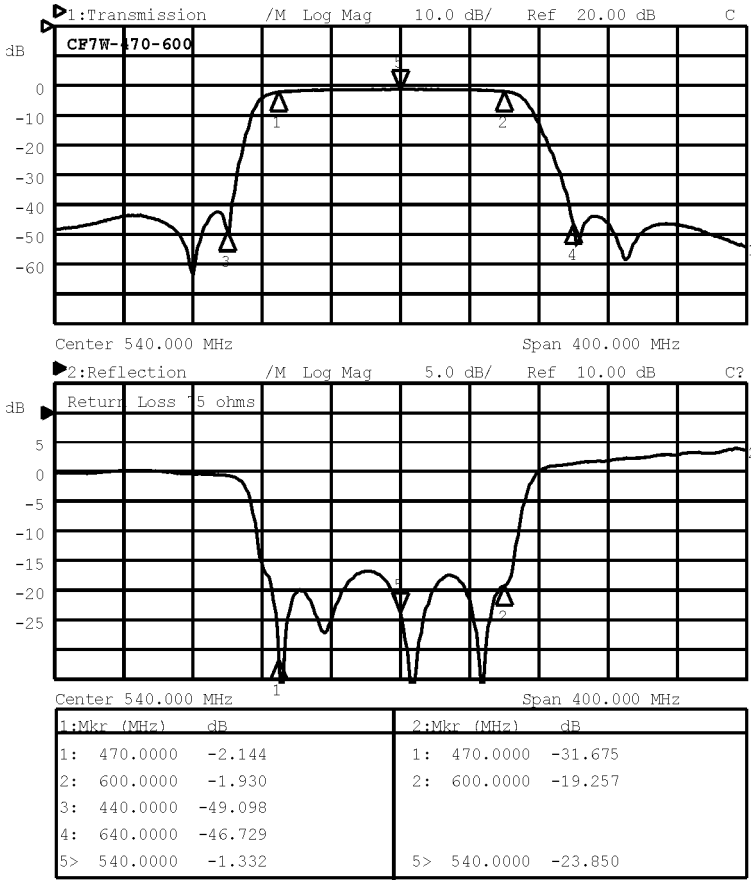
Ex 3: CF7W-470/600/617 RM N50 (rack mount, N 50 ohms)



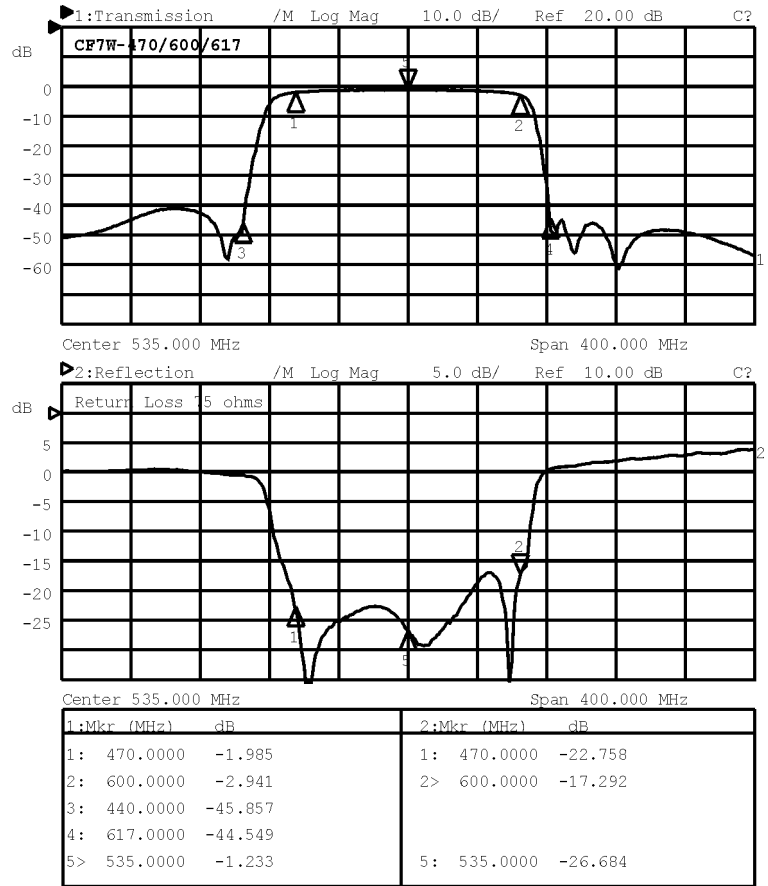


Example Graphs of CF7W Series UHF Bandpass Filters

CF7W-470/600 (ch.14-35)



CF7W-470/600/617 (ch.14-35), attenuate 617 MHz and above.



CF7W-470/600/617 (ch.14-35), attenuate 617 MHz and above.

