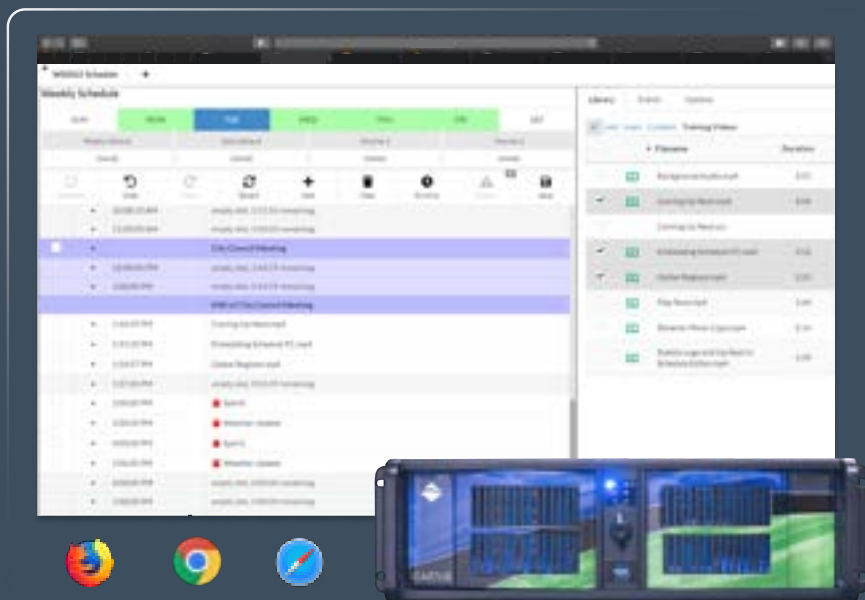


QUICKROLL



Capture, Schedule, Playout, & Stream - ALL IN ONE BOX!



BROWSER INTERFACE. EASY SCHEDULING.

OVERVIEW

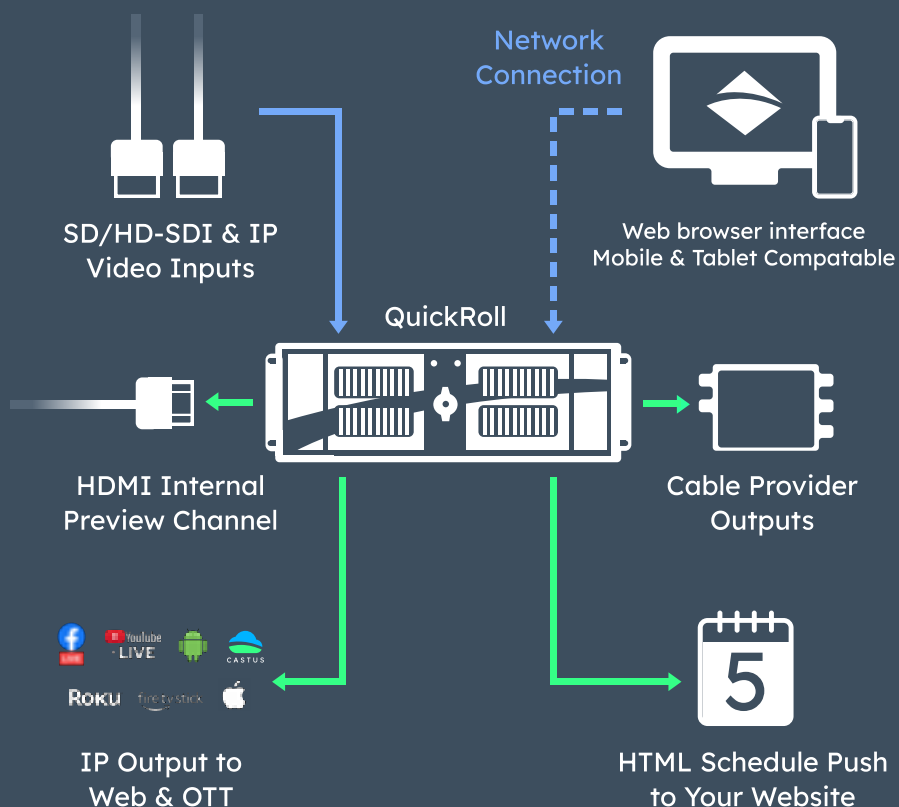
CASTUS QuickRoll is a powerful, multi-processing, multi-channel, video scheduling server. It is feature rich, reliable, and scalable to meet your needs today and into the future. The QuickRoll is built for IP and HD/SDI workflows and offers multiple inputs and outputs with additional IP multicasts available. Connect to CASTUS Cloud Services for OTT connectivity, live streaming, and easy re-stream options. Upload, schedule, and play nearly any file format with zero transcoding. Support for closed captioning included, which provides a compliant signal to cable and web for both live and Video on-Demand content.

FEATURES

- Secure user logins with password permissions & restrictions
- Stream to web 24/7, Facebook Live & YouTube Live
- Zero transcoding - HD/SD compatible
- IP inputs with RTMP support for virtual meetings
- Easy 'Click & Stick' scheduling + block scheduling
- Easy to create & edit bulletin boards
- Video editing with our non-linear editor 'CASTUS Cuts'
- Optional graphic overlays on IP and SDI outputs
- Automatic audio volume normalization on outputs
- Built-in confidence monitors for video and audio
- Create text & RSS crawls
- Automatic background music detection during slides
- Automatically fills gaps in schedule with 'Default Item'
- Digital SD/HD-SDI & IP inputs with router control
- Run reports for channels, programs, & metadata
- HDMI preview channel
- Reliable support & forum access (first year included)
- Support for NDI, SRT, RTMP, HLS, MPEG2TS and more

KEY HIGHLIGHTS

- Easy-to-use web based user interface
- Fast scheduling for programs and live events
- Air live inputs while recording simultaneously
- Support for Closed Captions: live, sidecar & embedded
- Stream to multiple destinations simultaneously
- Stream 24/7/365
- User login with permissions
- Independent channel output settings
- Linux operating system
- Web browser based user interface



MULTIPLE OPTIONS. EASILY CONFIGURED.

Perfect for- Public / Education / Government TV (PEG) or any multi-channel broadcast.

OUTPUTS

Video & Audio Output	Digital SD/HDI-SDI uncompressed video with embedded audio
IP Output	NDI, MPEG2 TS with MPEG2 or H.264 video, SRT, HLS, RTMP for social media streaming, a AC3 or MPEG audio
Preview Output	HDMI output for internal preview channel- audio and video

INPUTS

Inputs	SD/HD-SDI and IP over ethernet with 3.5mm line-in audio input
Supported Formats	MPEG2, MPEG4, SRT, NDI, RTMP, m2ts, mov, avi, mp4, m4a, wav, mp3, AAC & AC3

STORAGE

Options	8TB (Included) *Upgrade Options- 12TB, 16TB or 20TB. *8TB SSD option available
Redundancy	RAID 1
Operating System	250GB SSD internal drive for CASTUS & Linux OS
Integrates & Supports	CCS (CASTUS Cloud Services), SCTE-35, EAS (DAS), Rovi & Gracenote

SPECIFICATIONS

Operating System	Linux CASTUS OS (custom CASTUS OS)
Control Interface	Secure Web Interface (Firefox, Chrome or Safari)
Network Connection	(2) 1 gigabit connections. *Optional 10 GbE card
Data Center Integration	NTP
Controls	BlackMagic Smart Hub IP/SDI routing switcher, AJA, Knox routing switcher
Uploading Content	HTTP Web Interface & FTP/SFTP
Closed Captioning	608 (Line 21), 708 (Digital TV) & SCTE 20. Sidecar support for SCC, MCC, SRT & Web VTT
Total HD/SD inputs / outputs	8 inputs / 8 channels - (16) I/O's max configuration. *Each channel includes 1 IP output
Total Channel Overlay Regions	(8 overlays) 1-3 channels, (6 overlays) 4 channels, (4 or less overlays) 5+ channels

PHYSICAL

Power	200 Watts (max) based off the number of channels and I/O's
Power Consumption	Dual 600 Watt power supplies
Dimensions	19"D x 17"W x 5.5"H
Weight	45lbs

First year of C4 support included with purchase.

CASTUS is a customer centric organization. We value our customers and promise to provide them with excellent products and reliable support.

Our products have evolved over the years directly from customer feedback.

We are committed to continually improving our products.

Provided by: Mega Hertz | 800-883-8839 | info@go2mhz.com | www.go2mhz.com

<https://www.go2mhz.com/product/quickroll/>

