

7360 EPON Chassis System

CABINET AND HEAD END-BASED 10G EPON SOLUTION

CableLabs DPoE Certified

- Can be mounted horizontally or vertically in 19" or 23" data rack
- - NEBS, UL, FCC
- Hardened Equipment supporting extended temperature operation
- Can be installed in a building or an OSP cabinet with heat exchanger or AC unit



FX-4

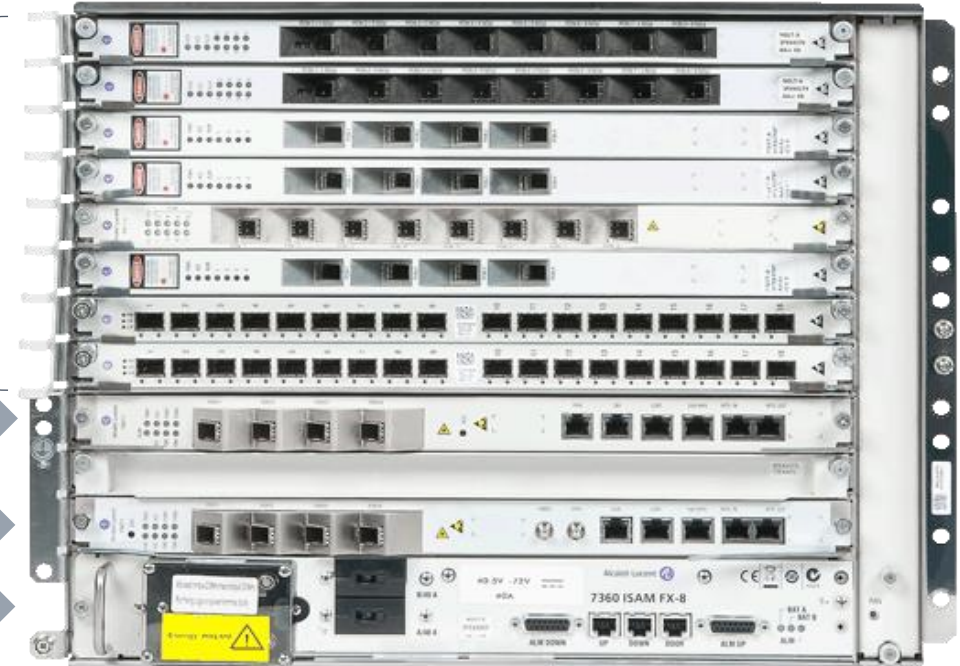
800-883-8839

LT Cards

NT-B →

NT-A →

GFC →



FX-8

- LT (Line Termination) – FX-4 Four LT Slots up to 4K Subscribers, FX-8 Eight LT Slots up to 8K Subscribers
- NT (Network Termination) – 2 Slots Providing Redundancy
- GFC (General Facilities Card) – Field Replaceable; Interfaces for Power, Timing, Alarms & Shelf Management; Alarm LED's; Circuit Breakers
- Fan Unit – Field Replaceable as well as Fan Filter, Variable Speed Fans, Control Board to Monitor Fan Failures
- Backplane - Interconnects LT slots to NT slots; Distribute Power & Alarms



FANT-G

- Controller
- 1.28 Tbps switching capacity, Double in Active-Active mode
- 1+1 Redundancy
- Up to 40G capacity to each LT slot
- One 100G, Four 10G SFP+ Network Links, One 1G RJ-45 Network Port
- LAG
- Optional BITS, SyncE, and IEEE 1588v2 clock recovery, High stability clock
- Advanced L2/L3/MPLS forwarding capabilities
- Enhanced routing support (RIP, OSPF, BGP, IS-IS)
- Powerful embedded Applications Enablement (AE) processor
- Industrial hardened for Indoor/Outdoor deployments

FANT-G 10G SFP+ Ethernet Optic Modules

- LR 10 km Reach, 1310 nm, Output Power Min -8.2 dBm Max 0.5 dBm, RX Sensitivity 14.4 dBm, Optical Budget 10 dB
- CWDM ZR 70 km Reach, Output Power Min 0 dBm Max 0.5 dBm, RX Overload -8.5 dBm, Optical Budget 21 or 23 dB, Wavelengths 1470 nm, 1490 nm, 1510 nm, 1530 nm, 1550 nm, 1570 nm, 1590 nm, 1610 nm
- DWDM ZR 80 km Reach, Output Power Min 0 dBm Max 4 dBm, RX Sensitivity -24 dBm, RX Overload -7 dBm, Optical Budget 24 dB, Channels 18 - 61



FPXT-B

- 8 EPON Ports
- Supports 10G EPON via pluggable optics
- Each port supports 10/10, 10/1 & 1/1
- Interworking function performs
 - L2 – switching packets
 - MAC Learning
 - Multicast
- Sophisticated onboard Traffic Manager
- I-Temp

FPXT-B 10G EPON XFP PR30 Optic Module

- Supports Downstream 10G or 1G
- Supports Upstream 10G or 1G
- Optical Budget 29 dB
- 20 km Reach
- 1577 nm TX
- 1270 nm RX
- Output Power Min 2 dBm Max 7 dBm
- Receive Sensitivity -28 dBm
- Overload -6 dBm
- I-Temp

